

PROTOURS  
DESTINATION *Chile*

Destination Management



Destination Guide

- > San Pedro de Atacama
- > Santiago
- > Central Region
- > Lake District
- > Easter Island
- > Patagonia





Hello! We are delighted that you are considering South America as the next travel destination. You will discover that a fascinating and varied country awaits you, offering warm hospitality, excellent facilities and memorable experiences.

At Protours we will utilize our extensive knowledge of the South American travel industry to organize the perfect visit from start to finish taking care of all your booking and logistic needs. Relax knowing that you are in safe experienced hands.

In the following pages we will give you an overview of the five distinctive locations within Chile. The huge variety of attractions and activities throughout Chile make it a genuine all-year-round destination, with the distinct regional climates each having its own appeal at different times of the year. In addition, various locations throughout the country are considered prosperous international travel hubs with the infrastructure to cater to any type of event.

With the assistance of Protours we can provide all the necessary expertise and support needed to make any trip a success! Please contact for more details or assistance.

*Your Protours Team*  
**info@protoursschile.com**

> San Pedro de Atacama

> Easter Island

> Santiago

Valparaiso  
Viña del Mar  
Wine Region

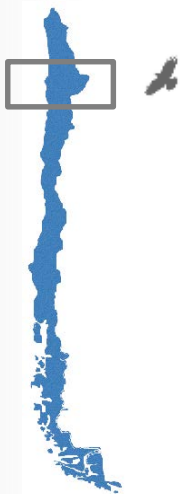
> Lake District

> Patagonia

<b>Population</b>	17.62 million
<b>Language</b>	Spanish
<b>Currency</b>	Chilean Peso
<b>Time Zone</b>	UTC/GMT - 4
<b>Flight Times</b>	12 hours <b>South Africa</b>



# San Pedro de Atacama



The northern oasis town of San Pedro sits amid the desert high plateau region of Chile, bordering Argentina and Bolivia. The town is known for its archaeological appeal and proximity to a variety of natural wonders, including active volcanoes, geysers, and hot springs. It is also widely regarded as one of the best locations in the world for star gazing, enjoying clear skies for an average of 340 nights per year.

**Calama (CJC)** is the closest commercial airport, approx. 99 km (60 miles) west of San Pedro de Atacama. There are several daily flights between Calama and Santiago, with a flight time of approximately **2 hours**.

Transfer time from Calama airport to the town of San Pedro of **60 minutes**.

Atacama enjoys a pleasantly mild and stable climate, making it a true year-round destination. An exception is late January/early February, which is known locally as "the Bolivian Winter". This phenomenon involves heavy rainfall in the surrounding highland region and affects the accessibility of certain excursions. Despite this, there are locations in the region where no rainfall has been recorded for over 300 years.



Activities & Highlights include:

- Sunrise at El Tatio Geysers
- Atacama Salt Flat
- Hiking & Sunset in the Moon Valley
- Altiplanic lagoons
- Andean Villages & local Indigenous cultures



San Pedro acts as the tourist hub for the whole Atacama region and despite its remote location and traditional appearance, the town is advanced in terms of the hotels, facilities and services available. Many hotels offer fully inclusive packages that include guided excursions, and several of the larger ones have events facilities with sufficient capacity for up to several hundred guests. There are four or five large high-end hotels, some of which are situated just outside the town itself, with a combined total of around 250 rooms. In addition there are rustic and boutique establishments well suited towards smaller incentive groups. Restaurants in the region serve up cuisine influenced by neighbouring Perú and Bolivia.

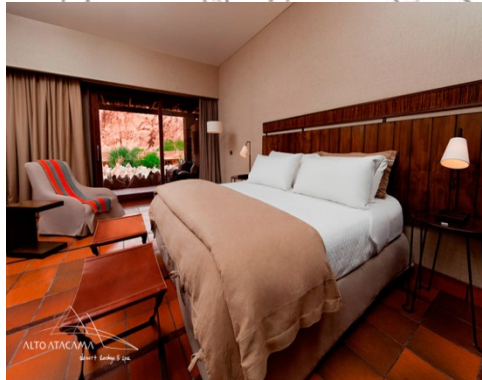
## Activity

**ATACAMA ANDEAN ASTRONOMY:** The Atacama Desert is internationally renowned for its astrological observations thanks to its clear skies and low humidity. This excursion will take us on a 2 - 3 hour tour of the beautiful stars and planets above. The evening will start by being picked up at our hotel and then traveling to different locations that have been handpicked due to their astronomical viewpoints. There we will be able to observe the night sky and discover a variety of constellations and planets while enjoying a lovely aperitif. This is an "out of the world experience"! (EVENING) (SNACK)





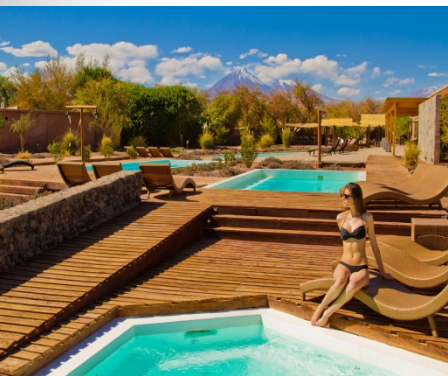
## San Pedro de Atacama



## Hotel Alto Atacama

Situated 3.5 km north west of San Pedro de Atacama, is the luxurious Alto Atacama. Blessed with a most spectacular and private location tucked away in a valley of serene beauty, the hotel sits in the shadow of the Pukará de Quitor ruins with the San Pedro River flowing gently alongside. It is the perfect base for absorbing the breathtaking desert landscape and star-filled night skies.

- 42 suites, all with private terraces
- Restaurant/Bar
- 5 swimming pools
- Spa with jacuzzi, sauna, massage
- Living rooms/relaxation areas
- Mobile Phone reception/signal
- Wi-Fi (Lounge) & Ethernet (Rooms)

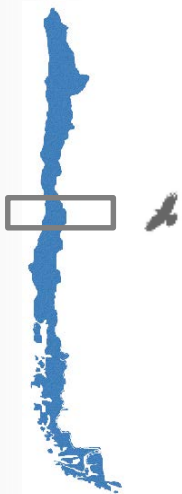


## Explora Atacama

In harmony with the surroundings and local traditions, Explora Atacama offers the discovery of the essence of nature and a philosophy of travelling that seeks to satisfy the desire of adventure in an intact universe. On foot, bicycle or horseback, they offer over 40 explorations immersing travelers in the natural and cultural wealth of the Atacama Desert. The hotel's 17 hectares are part of their conservation program, with which they aim to restore the area's historical and scientific value.

- 50 rooms designed to disconnect From Everyday Life
- Wi-Fi And Television in common areas
- Spa
- Quincho (BBQ Area)
- Restaurant & Bar
- Massage room
- Hotel store
- Observatory
- Stables and horses
- Puritama hot springs reserve

# Santiago de Chile



Santiago is the financial, cultural and political center of Chile, situated with Andean mountains and ski resorts to the East, the Pacific coast to the West, and some of the world's finest wine valleys to the South. Visitors discover South America's safest and most modern metropolis which boasts impressive architecture, cultural attractions, fine cuisine, exciting nightlife and countless shopping opportunities. An efficient underground metro system facilitates easy travel within this forward thinking yet historically rich and inherently Chilean city.

**Comodoro Arturo Merino Benítez International Airport (SCL)** is Santiago's national and international airport, and the principal hub of both LAN and Sky Airlines. Direct services operate to worldwide destinations (Including Paris & Madrid in Europe), and daily domestic flights to the north & south of Chile plus Easter Island.

Transfer time from the airport to downtown Santiago is just around **30 minutes**.

Santiago enjoys a somewhat cool Mediterranean climate, with temperatures varying throughout the year from an average of 20 °C (68 °F) in January, to 8 °C (46 °F) in June and July. January can get hot, often reaching over 30 °C before dropping considerably at nighttime. Some rainfall in June and July.



Activities & Highlights include:

- Bellavista & Lastarria Neighborhoods
- Santa Lucía Hill
- La Moneda
- Central Market
- Municipal Theatre & Various Museums
- Day trips to Valparaíso



Santiago offers an array of accommodation options to cater for all requirements and preferences, especially in the 3 to 5 star categories. There are also a considerable number of high quality establishments with large conference and event facilities. Smaller boutiques can also be found, as well as themed **venues suited for skiing**, vineyards etc. Shopping malls and markets are in abundance in the city and you can find a variety of restaurants serving local and international cuisine.

## Activity

**CHILEAN WINE VALLEYS A CULINARY EXPERIENCE:** We will enjoy the charm, comfort and cuisine of one of Chile's hidden jewels. Only 60 km from Santa Cruz towards the Andes lays Mapuyampay, in the center of wine country. This very area is one of Chile's principal growing regions and agricultural heartlands with major products including grapes, apples, pears, wheat, corn and peaches. This gastronomical hostel located in the Curicó Valley will be the setting for an unforgettable day filled with delicious food and exquisite wines. The chef, Ruth will take us under her wing and show us some of the secrets to preparing an excellent menu, all while enjoying the peace and beauty of this hidden paradise. (HD)(L)





### Valle Nevado

Valle Nevado is a ski resort located on the El Plomo foothills in the Andes Mountains, at 46 km to the east of Santiago, the capital of Chile. Founded in 1988 by French entrepreneurs Valle Nevado offers access to the largest skiable domain in South America: nearly 7,000 acres.

With such a vast amount of terrain the resort caters to all levels of skiers and snowboarders. In addition it is home to several lodging and dining options. Furthermore Valle Nevado boasts 80% sunny days, but because of the resort's high altitude and orientation the quality of Valle Nevado's snow remains in optimum conditions.



### La Parva

La Parva is a town and ski resort located about 50 km (31 mi) northeast of the Chilean capital of Santiago. It is in the middle ridge of the "3 Valleys" resorts that also includes El Colorado and Valle Nevado.

Fourteen lifts access 30 square kilometers of skiable terrain; 30 trails range from beginner to expert. The ski area of La Parva climbs a long ridge. Adventure skiers can access areas like La Chimenea, a perfectly shaped chute, or La Cara, a steep south facing wall. Heliskiing and snowboarding are also available on-site.

In addition La Parva Ski Center has a condominium and several restaurants and snack bars with international food. In the La Parva village several services are available such as lodging, eateries, ski school, bars, transfer services, coffee shops, discotheques, hospital and parking.

### El Colorado

El Colorado is located 56 km east of Santiago Chile and only 44 km from Las Condes sector in Santiago. El Colorado sits above the Farellones village (5 km by road), and is bordered by La Parva and Valle Nevado on either side.

El Colorado is made up of two ski areas (El Colorado and Farellones) that sit above two interconnected villages; Villa Colorado and Villa Farellones. The main ski area is El Colorado, whilst Farellones is really only for beginners and tubing enthusiasts and has access for those staying down in the Farellones village.

The interconnected Farellones and El Colorado make up a large treeless ski area with combined statistics of 1,100 hectares, 101 ski slopes, and 1,090 meters of vertical.





## Hotel W

Against a panoramic backdrop of the snow-capped Andes, the trendy 'W Santiago' oozes style from within the city's most fashionable enclave. The hotel's motto is Whatever/Whenever, and this statement resonates in the exceptional service and modern facilities on offer for guests. As well as having 196 bedrooms, the W also has 1,712 square meters of event space and studios including creative and fully adaptable conference equipment. The 'Great Room' comfortably hosts up to 1,200 people when fully opened up, or can be divided into smaller spaces. The W also boasts a luxurious array of facilities, including spa, pool, bar & restaurant.

- 196 Rooms
  - Including 20 suites
- 2 Restaurants/Bars
- Rooftop swimming pool
- Spa & Gym
- Lounge areas
- Events Facilities
- Meeting Rooms
- Wi-Fi



## Ritz Carlton

An unforgettable five-star hotel in Chile located in the heart of 'El Golf', one of Santiago's most prestigious neighborhoods. Featuring exceptional accommodations and impeccable service, guests at this luxury hotel can enjoy soothing spa services at the rooftop Health and Fitness Center or dine at one of the hotel's four distinctive restaurants. Situated 30 minutes from Commodoro Arturo Merino Benitez International Airport, the Ritz Carlton has a conference room to hold 350 people, and three others with a capacity of 100 each. In addition, there is a boardroom for corporate meetings, and services such as work desks, printers and photocopiers are provided.

- 205 Rooms (Including Club Rooms, 3 Club Suites, 12 Exec. Suites)
- 5 Restaurants/Bars
- Health and Fitness Centre
- Spa, Pool, Jacuzzi
- Lounge areas
- Conference Rooms
- Boardroom (seats 10)





## Noi Vitacura

Located in the heart of Alonso de Córdova, a neighborhood known throughout Chile for its designer boutiques. The strategic location puts you just minutes away from the neighborhood of El Golf, the financial and corporate heart of Santiago, plus Parque Bicentenario, and offers easy access to the airport. Event facilities comprise of a 200 person meeting space, plus four 20 person rooms. Depending on the required configuration, the capacity of the event rooms can be altered. You will find state of the art facilities and quality service throughout the hotel.

- 87 rooms
- Safe deposit box
- 1 Restaurants (Territorio)
- 1 Bars (Tramonto)
- SPA, 2 swimming pools, fitness centre
- Meeting rooms
- Conference Hall



## Sheraton Hotel & Convention Centre

Within walking distance of popular sites such as; Pablo Neruda's house, San Cristóbal Hill, the district's best shopping, restaurants and pubs. The hotel is also just 12 minutes drive from the airport and an easy drive to and from Valparaíso & Viña del Mar, Andean ski centers, lakes and mountains. For both corporate and social gatherings, banquet and planning staff can transform the country's largest hotel meeting facility into a wonderful setting for groups of 10 to 1,500 or more. Spaces feature extensive color scheme choices, modern audiovisual equipment, and more. 'Virtual Meeting Planner' lets you create your function with a real meeting space, customize it, and see it in 3-D.

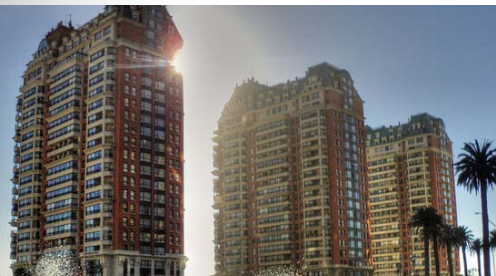
- 386 rooms
- Club Floor, Suite, Classic
- Plasma TV & safety deposit boxes
- Views of Andes or City
- 2 Restaurants (gourmet El Cid and El Bohio)
- Swimming pools
- Fitness centre, Spa & Beauty Salon
- Business Centre
- 15 Meeting Spaces



### Valparaíso

The port of 'Valpo' is a city of great heritage and bohemian character and presents a vibrant centre of Chilean culture. Part of the city was designated a World Heritage Site by UNESCO in 2003, and within this natural amphitheatre-like setting is a delightfully colourful and charismatic haphazard sprawl of urban development. The scene is made even more unique by the numerous funiculars which have since become synonymous with the city.

Located only 1.5 hours drive from Santiago, the city is home to a range of top quality restaurants and hotels, mostly in the small-mid size boutique category. Valpo makes a great alternative destination for basing a group as opposed to staying in the capital as it offers a different perspective of Chile's unique surroundings.



### Viña del Mar

Valparaíso's adjoining city of Viña del Mar ('The Garden City') on the Pacific coast is in contrast to the architecture on show just along the bay. With its golden beaches, modern infrastructure and high-rise architecture, Viña is a sleeker coastal resort with state of the art tourism infrastructure and numerous large scale hotels. A popular summer destination for Chileans escaping to the cooler weather, and increasingly international tourists, it may not have the cultural appeal of the other nearby cities in the region but it makes up for that by the immaculate facilities and service that you will no doubt encounter.

A beach resort base can prove to be the ideal solution for trips that are a combination of relaxation, business meetings, and day trip travel for site visits or excursions. There is easy access direct to and from Santiago airport and a high hotel capacity to cater for all types of event or group travel itinerary.

### Santa Cruz & Wine Valleys

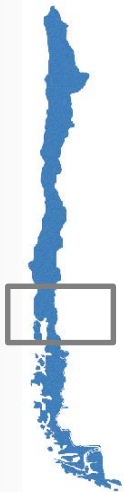
Chile has become internationally renowned for its high quality wine production, and the fertile central valleys with their Mediterranean climates make memorable destinations to visit, whether it be for business or leisure.

The valley of Colchagua is located 180 km from Santiago, the southernmost portion of the Rapel Valley has earned much applause for its Cabernet, Carménère, Syrah, and Malbec wine varieties. The majority of the wineries are concentrated in the centre of the valley, although new plantations climb hillsides and explore the western frontier toward the sea. The town of Santa Cruz makes an ideal hub in the region and several hotels and wineries provide top class accommodation and facilities.

Maipo valley is one of the country's oldest and most diverse productive regions and is the closest to Santiago. Vineyards stretch eastward from Santiago to the Andes and westward to the coast to form three distinct sectors - known for the well-balanced red wines.



## Southern Chile & Lake District



This is Chile at its greenest, calmest and most rustic. Where Araucaria trees (monkey puzzles) adorn the hillsides and volcanoes rise mightily amid a dream-like landscape scattered with a stunning array of mountains, rivers, forests, lakes and hot springs. Also known for its ski centres, indigenous Mapuche culture and gastronomy, the region is the perfect destination for outdoor adventure and to sample the friendliness of the southern hospitality and culture.

Direct flights from Santiago with domestic airlines (LAN & Sky)  
 Santiago – **Puerto Montt (PMC)** in 1 hour 50 mins  
 Santiago – **Temuco (ZCO)** in 1 hour 20 mins  
 Santiago – **Osorno (ZOS)** in 1 hour 40 mins  
 Also airports in Valdivia and Castro (Chiloé)

Puerto Montt to Puerto Varas – **30 minutes** by car  
 Temuco to Pucón – **90 minutes** by car  
 Osorno to Huilo Huilo – **150 minutes** by car

An all-season destination with a temperate climate. Rain is common between April and December and gives the region its lush green appearance. Summer months are January and February.



Activities & Highlights include:

- Climbing Villarrica Volcano, just outside Pucón
- Hot springs of Araucanía
- Petrohué Falls & Todos los Santos Lake, near Puerto Varas
- Chiloé Island and archipelago
- Puerto Varas, including Llanquihue Lake & Osorno Volcano
- National Parks (Vicente Pérez Rosales, Huerquehue, Conguillío)



As well as being easily accessible from the north by air, the Pan American Highway runs straight through the Lake District. Domestic and International tourism has meant that there is a strong selection of hotel accommodation, and experienced suppliers in general. The southern hub of Puerto Varas offers the most in terms of having a developed infrastructure and numerous surrounding outdoor attractions. Other destinations such as Pucón and Huilo Huilo also have their individual appeal. The location combines well with cross-border travel into Argentina, including the neighbouring towns of Bariloche and San Martin de los Andes.

### Activity

**PETROHUÉ WATERFALLS AND OSORNO VOLCANO:** On this delightful excursion we will head towards the Vicente Perez Rosales National Park. Along the way we will make a variety of small stops including: Mirador Los Riscos (a beautiful lookout point featuring the Osorno Volcano) and Mirador Onces Bellavista (a nice spot to observe llamas, deer and emus). Once inside the park we will pass a lagoon home to the famous Torrent duck and then continue on to the Petrohué River and the Petrohué Waterfalls. There we will take time to explore our surroundings to the fullest and take some beautiful pictures. Afterwards we will continue a little further up the path and arrive to the Todos los Santos Lake where we will take a 30 minute boat ride across the emerald water. Subsequently we will then board our vehicle for a 40 minute drive to reach the famous Osorno Volcano. Depending on weather conditions we might take a small trek to visit the nearby lakes, craters, ski center and its restaurant. We will also be treated some free time for lunch (not included) and when the time is right after a full and happy day we will return back to our hotel. (FD)





## Lake District Huilo Huilo



## Award Winning Biological Reserve

The Huilo Huilo Biological Reserve is located 860 kilometers south of Santiago, in "Region de los Rios" in the middle of the Patagonian Andes and in the heart of the Valdivian eco-region. It is a private protected area spanning 100,000 hectares of native forest, and supporting a diversity of flora and fauna. The area offers opportunities for ecotourism and various outdoor activities such as trekking, kayaking, canopy exploration, horse riding and mountain biking.

The Huilo Huilo Foundation exists to protect, conserve and restore this delicate temperate rainforest, for example the "Southern Huemul Conservation Centre" . The great efforts of everyone involved at Huilo Huilo in their pioneering sustainable tourism techniques have recently been recognized globally, as two international awards have recently been received.

There are a range of uniquely designed accommodation options for visitors to Huilo Huilo Biological Reserve, including hotels, cabins, hostels and camp grounds. Completing the on-site facilities are a health spa, thermal baths, brewery, adventure centre, museum, and several restaurants. The three main hotels for consideration are; Nawelpi Lodge, Nothofagus Hotel & Spa, Montaña Mágica Lodge.

One of the hotels within Huilo Huilo Biological Reserve is featured below.....



## Nothofagus

A truly unique experience awaits guests at the enchanting Nothofagus. Deep into the woods, following a watercourse, the Nothofagus structure appears, raising up into the tops of the trees, before emerge and revealing the magnificent environment of the Patagonian Andes. There are 55 rooms, distributed over 7 floors with spectacular views. It also has 2 dining rooms, living room, including exquisite dining and excellent service. To access the rooms you can use a panoramic lift or a ramp with a gentle slope that circulates throughout the interior. "Black Woodpecker", the convention hall covers an area of 250 m<sup>2</sup> which is divided in two rooms of 100 m<sup>2</sup> and 150 m<sup>2</sup> each. It has a maximum capacity of 200 people, depending on the set up.

- 55 rooms: most with balcony
- Restaurant & Bar
- Spa, sauna, massage
- Indoor and outdoor swimming pool
- Event facilities/ Meeting Room
- Free Wi-Fi



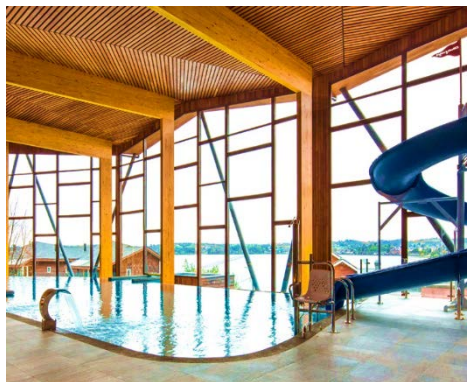
Lake District  
Puerto Varas



## Hotel Cumbres Puerto Varas

Spectacular views of Osorno & Calbuco Volcanoes plus Llanquihue Lake greet you upon arrival at Hotel Cumbres, as do excellent facilities and service in the beautiful location only 5 minutes walk from the town centre. The hotel has 5 versatile lounges to suit requirements for events, meetings, conventions, seminars and conferences in Puerto Varas. The largest space has a capacity of 420 people. Other facilities include restaurant, bar, and spa.

- 90 rooms: standard, superior, luxury, suite, presidential suite.
- Indoor living/relaxation area
- Restaurant & Bar
- Swimming pool
- Meeting/conference rooms
- Spa
- Business centre



## Cabañas del Lago

A family owned business, founded in 1980, which has maintained the traditional German customs that are part of the city's unique cultural identity. 157 rooms distributed within an architectural beauty that proudly stands on the hilltops of Puerto Varas, overlooking Lake Llanquihue with a stunning view of the volcanoes. The hotel is also an excellent choice for business, social and family events as it has a large infrastructure to allow for seminars, meetings, weddings and any type of event. The salons come fully equipped with and include underground parking.

- 157 rooms ( standard, superior, suite) and cabins.
- Indoor living/relaxation area
- Pool/spa/exercise room
- Restaurant and bar
- 3 Meeting rooms
- Private restaurant
- Parking for 50 cars



## Southern Patagonia



'The end of the world' - remote, vast, infinitely beautiful, wild and untamable. Patagonia evokes a sense of wonder at the great outdoors, and is a truly unique destination that has become increasingly accessible for all to discover and enjoy. The towns of Punta Arenas and Puerto Natales have numerous accommodation options and make good hubs from which to explore the surrounding national parks. For wildlife lovers there is opportunity to see species such as whales, sea lions, seals and penguins in their natural habitats.



Direct flights from Santiago with domestic airlines (LAN & Sky)  
Santiago – **Punta Arenas (PUQ)** in 3 hours 25 mins  
Puerto Montt – **Punta Arenas** in 2 hours 10 mins



Punta Arenas Airport to town centre – **15 minutes** by car  
Punta Arenas to Puerto Natales – **3 hours** by car  
Puerto Natales to Torres del Paine National Park – **2 hours** by car



The summer months of January and February feature long warm days and cool nights, but on the whole the weather in Patagonia is very unpredictable and changes rapidly. Because of the vast distances, there are important climatic variations in the region, influenced by the topography, sea and winds. It is not uncommon to experience several seasons of weather within one day.



Activities & Highlights include:

- Trekking in Torres del Paine National Park
- Visiting the glacier at Grey Lake (within TDP)
- Tierra del Fuego Island
- Magellan Strait and Patagonian Fjords
- Links to Argentina: Ushuaia, El Calafate, Rio Gallegos.



Despite being somewhat cut off from the rest of Chile, the Magallanes Region of Patagonia is more accessible than the more northerly Aisen Region. Punta Arenas has an airport, well-maintained roads, several bus and transfer companies, and cruise and road links to Argentina. The towns of Punta Arenas and Puerto Natales are well-equipped to cater for those arriving to explore the National Parks and nearby natural wonders. Large high-end hotels with event facilities can be found in Puerto Natales and also close to Torres del Paine N.P. with combined capacities to host several hundred people. With this region being one of the world's finest for outdoor activities, plus for wildlife and nature attractions, the standard of guiding and tours is first class.

### Activity

**CARRETERA AUSTRAL & PATAGONIA CONDOR WATCHING:** On this once in a life time excursion we will witness these immense animals in their natural habitat. Our tour will start in Punta Arenas where we will travel to Estancia Olga Teresa where we will have some time to enjoy our surroundings and have a small snack. Afterwards we will travel to the Palomares Hill; home to several condors. There we will take a small walk up hill, where we will be able to observe these magnificent creatures up close without causing any major disturbances.. There is also a number of other bird species that can be found there. It goes without saying that this excursion is a must see and do for both the amateur and professional photographers. (HD) (SNACK)



# Southern Patagonia Cruises



## Skorpios

Skorpios is one the most well-known and respected cruise lines in Chile. It offers a variety of explorations throughout the Patagonia, on well equipped and comfortable ships.

### **CHONOS Route** (Northern Ice Field)

M/V Skorpios II sails from the Skorpios Terminal in Puerto Montt, a town located 1,000 km south of Santiago, which can be reached by road or air. This 5 day cruise that covers 800 miles, sails every Saturday to return on Thursday between the months of September and May. The cruise covers 800 miles for a magical encounter with the age-old ice formations of the San Rafael Glacier, sailing through awesome archipelagos, channels and gulfs to tour this incredible territory that includes towns like Castro and the fishing village of Puerto Aguirre, which displays the natural wonders of a vigorous landscape and wildlife which is best appreciated at Quitalco Fjord with its hot springs and excursions to its vast island-peppered sea.

### **KAWESKAR Route** (Southern Ice Field)

M/V Skorpios III sails from the Skorpios Terminal in Puerto Natales, a town located 2,500 km south of Santiago, which can be reached by air from Punta Arenas or by land from Argentina. This 3-night cruise sails for the Southern Ice Fields every Tuesday and Friday (see sailing schedule) to return every Monday and Friday between the months of October and April, covering most of the glaciers in the area, namely Amalia, El Brujo, Bernal and Herman, and those located in the area of Calvo Fjord. The cruise includes around 15 glaciers, some of which we will contemplate and admire directly, walking up to their front and moraines, and sailing through multi-coloured ice-floes on smaller expedition vessels like the Capitán Konstantino; from where we will have the chance to observe de varied Patagonian flora and fauna in all its natural glory.



## Alternative Options

There are a variety of other cruise options and itineraries that travel the wonders of the southern hemisphere. Distinguished companies include Stella Australis (specializing in the waterways of southern Patagonia including Cape Horn, the Strait of Magellan, Tierra del Fuego and the Beagle Channel), Antarctica XX1 (known for its first class air-cruises with time in Antarctica) & Fitz Roy (recognized for its historic and whale watching expeditions).







## Southern Patagonia



## The Singular Patagonia

The building at Puerto Bories has been a National Monument since 1996, and after initially functioning as a museum, was assigned to The Singular hotel who over ten years turned the complex into a luxury hotel following strict protocols of heritage care. The result is a beautiful modern, and unique hotel, that offers amazing views, large rooms (45m2) a beautiful Spa and many special off-the-beaten track excursion option. The rooms are located in a new construction and the original storehouse houses the dining room, reception, bar and private museum.

- 54 rooms and 3 suites.
- Restaurant / Bar
- Spa & sauna.
- Swimming pool
- Several excursion options



## Tierra Patagonia

Enjoy beautiful views across Lake Sarmiento and on to the towers of Torres del Paine from this wonderful location. Immersed in the natural Patagonian landscape, the newly designed hotel provides a spacious and relaxing place to stay with the added luxury of it's spa and dining facilities, and the proximity of numerous first class excursions in Torres del Paine national park. Facilities suit smaller groups for meetings or incentives trips where a combination of luxury service and outdoor activities is desired.

- 3 suites + 37 doubles
- Standard, suite, superior and family apartments.
- Equipped with: safe, hair dryer and telephone.
- 'Uma' Spa including: indoor pool, outdoor jacuzzi, sauna, steam bath.
- Living room, bar, library, TV room and WiFi .

# Isla de Pascua Easter Island



Tepito Ote Henua ("The Center of the World"), as the people who lived there once called it, is the most remote inhabited island on the planet and to visit this isolated part of the world is a very special experience. A turbulent history involving a complex culture that ultimately met its demise gives the island an aura of mystery, as does the mesmerising collection of sculpted stone figures known as 'Moai' that can be found all over the island. Rapa Nui, or Isla de Pascua in Spanish, is a National Park and UNESCO World Heritage Site.



Flights from Santiago and Tahiti with LAN  
Santiago (SCL) – **Mataveri International (IPC)** in 5 hours 40 mins  
Papeete, Tahiti (PPT) – **Mataveri International (IPC)** in 5 hours 45 mins



Airport to Hanga Roa downtown– **5 minutes** by car  
Time zone is 2 hours behind mainland Chile. GMT – 6hrs (+1hr Daylight Saving)



The climate of Easter Island is subtropical maritime, the isolated location exposes it to winds which help to keep the temperature fairly cool. The lowest temperatures are recorded in July and August (approx. 16 °C) and the highest in February (maximum 28 °C)



3,512 km  
(2,182 mi)



Activities & Highlights include:

- Hundreds of Moai statues
- Intricate natural cave systems
- Hidden beaches and bays
- Scuba diving and snorkeling
- Petroglyph rock engravings
- Rapa Nui people, culture & traditions



Hanga Roa is the only sizable settlement on the island, and the lack of considerable infrastructure is an appealing aspect of such a destination. Having said that, navigating around the island is easy by car, on foot, horseback, or bike. There are several accommodation options at the high-end level that cater for groups and events located in and around the town. The overall capacity for accommodation is obviously lower than other locations on the mainland but the service standard is just as high. In addition there are established outdoor activity agencies for arranging leisure activities and tours with.



## Activity

**UMU EXPERIENCE:** This amazing event offers us a complete Rapa Nui cultural immersion. We will have the opportunity to learn about the islands lifestyle and people while partaking in the preparation and consumption of a traditional umu dinner. Our night will commence as we are met by islanders and have our faces painted while enjoying a tropical drink (with or without alcohol). It will then continue as we start to prepare the banquet. The umu is a customary Polynesian cooking method where food is heated in an earth oven or cooking pit. This culinary style is also well known in Chiles Lake Region, specifically in Chiloe where it goes by the name of curanto. The meal typically consists of seafood, poultry, meat, taro, assorted vegetables and tubers. The ingredients are placed on and around hot stones, protected with banana leaves and covered with soil. Subsequently the food is left to cook over several hours. Once done, the dish will be unveiled with a special ceremony as we all sit down and enjoy the dinner together. The meal is served buffet style and accompanied with vegetable and fruit salad. Afterwards we will be treated to an exciting Polynesian dance show. This excursion is offered year-around on Mondays, Wednesdays and Fridays. (HD) (D)







## Isla de Pascua Easter Island



## Explora

Opened in December 2007, the Explora Hotel is situated on a hill in the south-eastern 'Te Miro Oone' area, 8 kilometers from Hanga Roa. All of the 30 rooms, which extend to the north and south from a central building, have excellent ocean views. The lodge has welcoming indoor spaces which integrate aspects of the local culture. The design is intended to have minimal impact on its surroundings. The lodge is built on a site which is inappropriate for agricultural use and has no archaeological remains, with the surrounding flora also being protected.

- 30 guestrooms and suites.
- Comfort, privacy and privileged views of the ocean.
- Restaurant / Bar
- Spa with swimming pool, Jacuzzi, massage room
- Gift shop



## Hanga Roa

An Eco Village and Spa with a philosophy based on sustainability and a sensitivity towards the island's nature and culture. The architectural design is a tribute to the village of Orongo, whose remains are still visible on the western summit of the Rano Kau Volcano. An attractive feature of this hotel is the events facilities available for use. The main meeting room is a hall covering 400m<sup>2</sup>, and has a capacity to accommodate up to 300 people. There is also an auditorium/cinema space of 94m<sup>2</sup> which is available for events of up to 60 people. Finally there is the boardroom designed for small meetings of up to 12 people, which is 32 m<sup>2</sup>.

- 69 Kainga rooms.
- 6 Maunga suites.
- Poerava and Kaloa restaurants.
- Vaikoa pool-bar.
- 3 event rooms.
- Spa, swimming pool and massage services.
- A variety of excursions and adventures available.